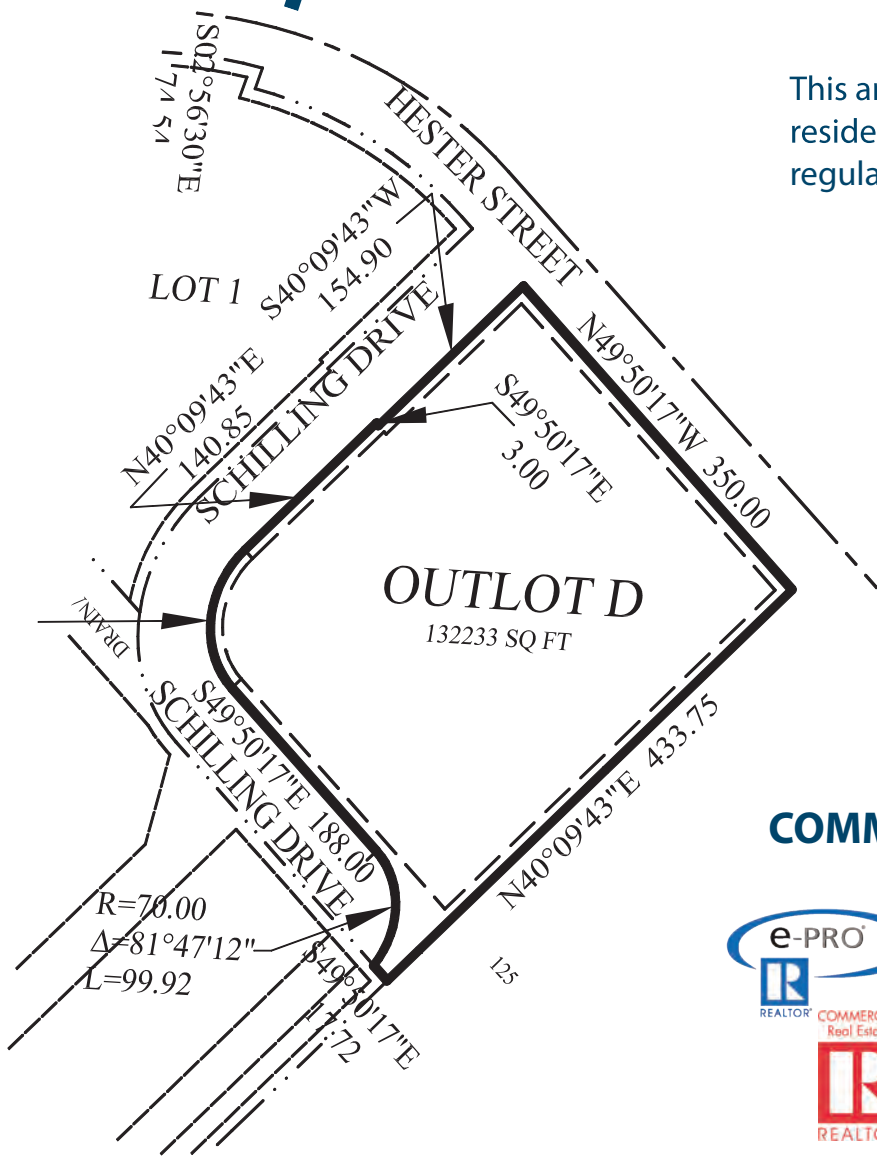


Dundas, MN



This area has a lot of traffic and is frequented by residents of Nothfield, Dundas and Faribault regularly.

Many homes have been constructed over the last 2-5 years, expanding the tax base and growing the numbers of patrons in local businesses.



**KEVIN GREEN**  
**COMMERCIAL REAL ESTATE BROKER**  
[www.landvista.com](http://www.landvista.com)

Cell: 952.292.2370

Office: 507-645-2499

[kevingreen@landvista.com](mailto:kevingreen@landvista.com)

Licensed in Minnesota & Iowa



**Business Quick Facts**

Private nonfarm establishments, 2009  
 Private nonfarm employment, 2009  
 Private nonfarm employment, % change 2000-2009  
 Non-employer establishments, 2009

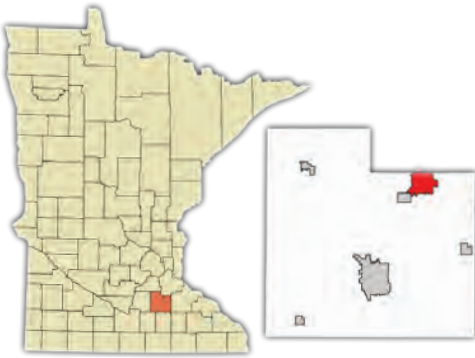
Rice County	Minnesota
1,504	146,4531
22,952	2,417,1741
7.5%	0.9%1
3,957	362,739

Total number of firms, 2007  
 Black-owned firms, %, 2007  
 American Indian- and Alaska Native-owned firms, %, 2007  
 Asian-owned firms, %, 2007  
 Native Hawaiian and Other Pacific Islander-owned firms, %, 2007  
 Hispanic-owned firms, %, 2007  
 Women-owned firms, %, 2007

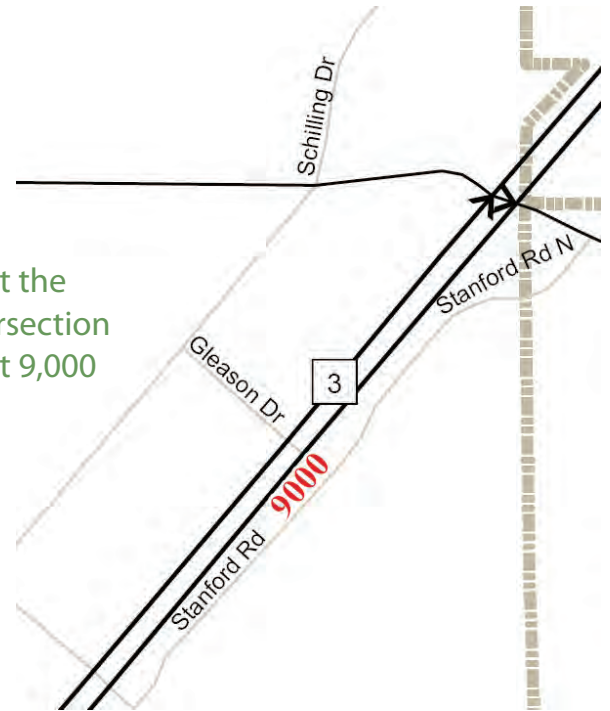
5,177	496,657
F	2.5%
F	0.6%
S	2.3%
F	S
F	1.0%
27.0%	26.8%

Manufacturer's shipments, 2007 (\$1000)  
 Merchant wholesaler sales, 2007 (\$1000)  
 Retail sales, 2007 (\$1000)  
 Retail sales per capita, 2007  
 Accommodation and food services sales, 2007 (\$1000)  
 Building permits, 2010

1,397,918	107,563,060
D	82,878,056
599,153	71,384,103
\$9,666	\$13,751
80,619	10,423,660
85	9,840



Traffic Counts at the Highway 3 intersection are estimated at 9,000 vehicles daily.



*Directions to  
 605 Schilling Drive*

From the Twin Cities  
 take I-35 South  
 Exit #66, County Rd 1  
 Travel 4.5 miles  
 Turn Left on Railway St  
 Turn Right on Hester St  
 The subjects are on  
 either side of Hester Street



**KEVIN GREEN**  
**COMMERCIAL REAL ESTATE BROKER**  
[www.landvista.com](http://www.landvista.com)

Cell: 952.292.2370

Office: 507-645-2499

kevingreen@landvista.com

Licensed in Minnesota & Iowa

